

SHIFT LEVER DISASSEMBLY

CAUTION / NOTICE / HINT

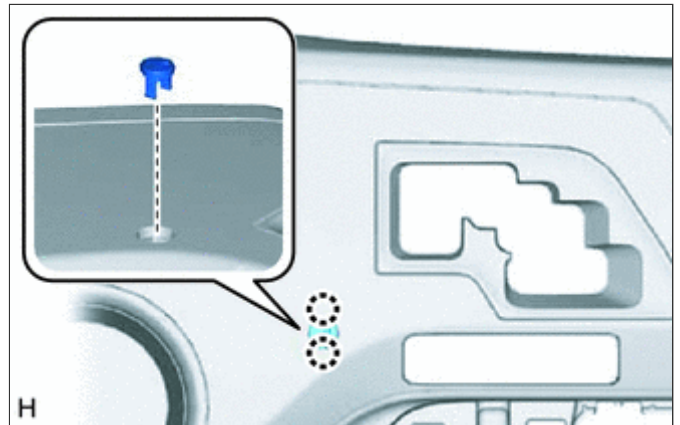
Tech Tips

- Use the same procedure for RHD and LHD vehicles.
- The procedure listed below is for LHD vehicles.

PROCEDURE

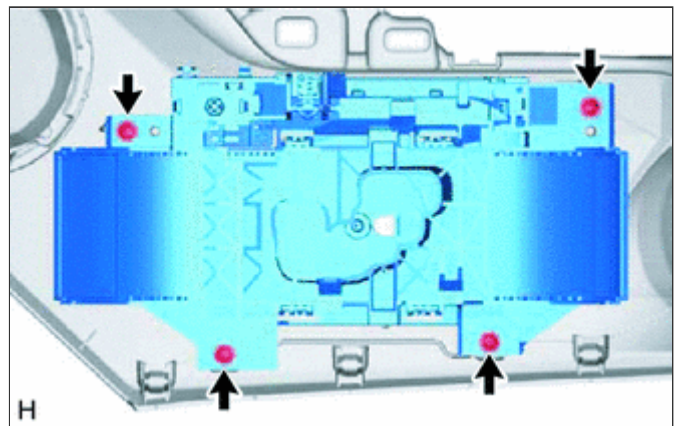
1. REMOVE SHIFT LOCK RELEASE BUTTON COVER

- a. Detach the 2 claws and remove the shift lock release button cover from the upper console panel sub-assembly.



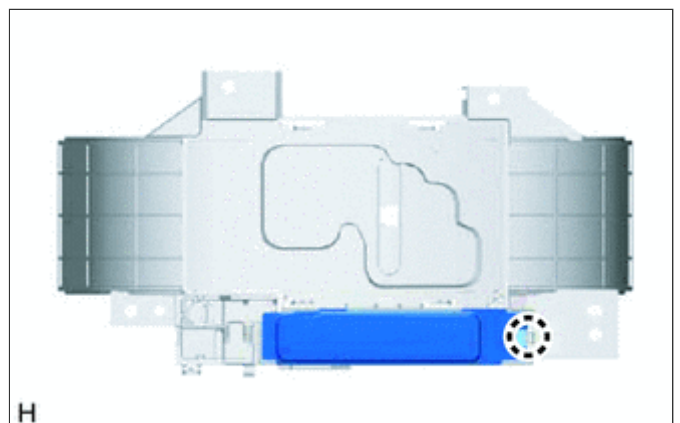
2. REMOVE POSITION INDICATOR HOUSING

- a. Remove the 4 screws and position indicator housing from the rear upper console panel sub-assembly.



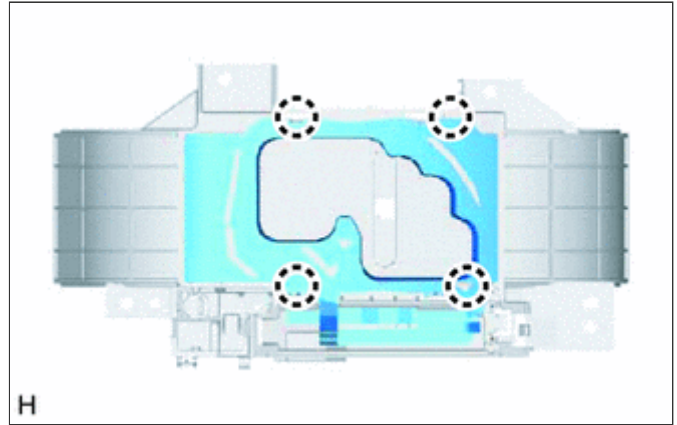
3. REMOVE CONTROL POSITION INDICATOR PLATE

- a. Detach the claw and remove the control position indicator plate.



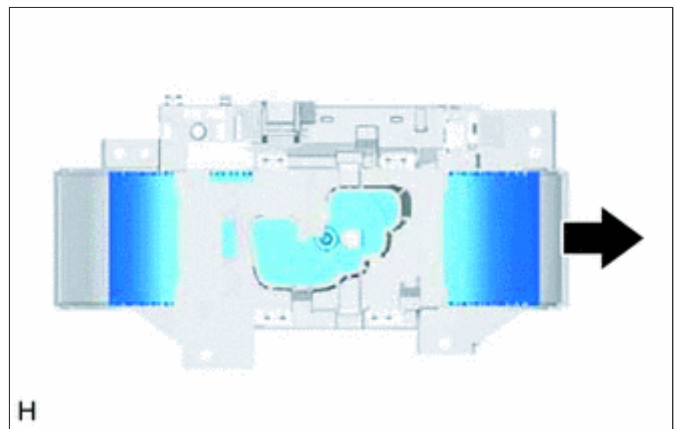
4. REMOVE POSITION INDICATOR LENS

- a. Detach the 4 claws and remove the position indicator lens.



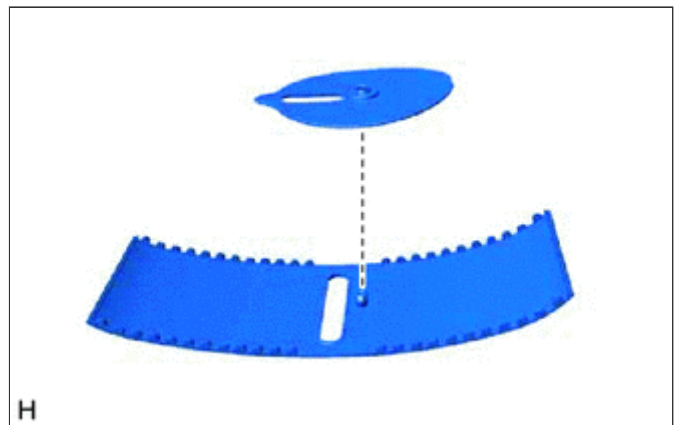
5. REMOVE POSITION INDICATOR SLIDE COVER

- a. Remove the position indicator slide cover together with No. 2 position indicator slide cover from the position indicator housing.



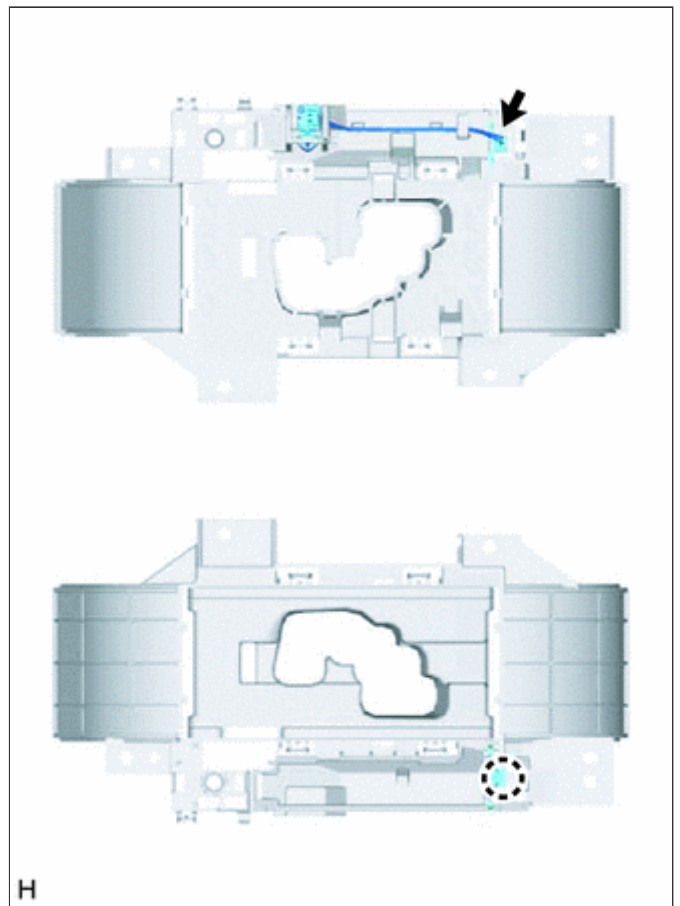
6. REMOVE NO. 2 POSITION INDICATOR SLIDE COVER

- a. Remove the No. 2 position indicator slide cover from the position indicator slide cover.



7. REMOVE INDICATOR LIGHT

- a. Disconnect the connector.
- b. Using a plastic bag, detach the claw and remove the indicator light from the position indicator housing.



8. REMOVE SHIFT LOCK RELEASE BUTTON

- a. Detach the 2 claws and remove the shift lock release button and spring from the position indicator housing.

